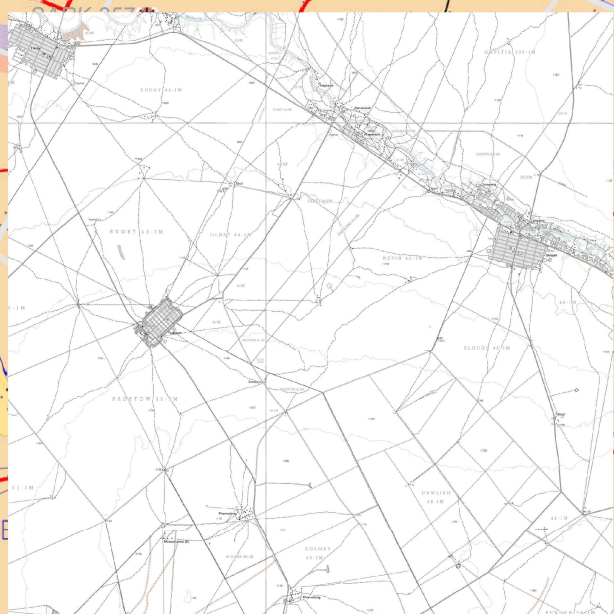
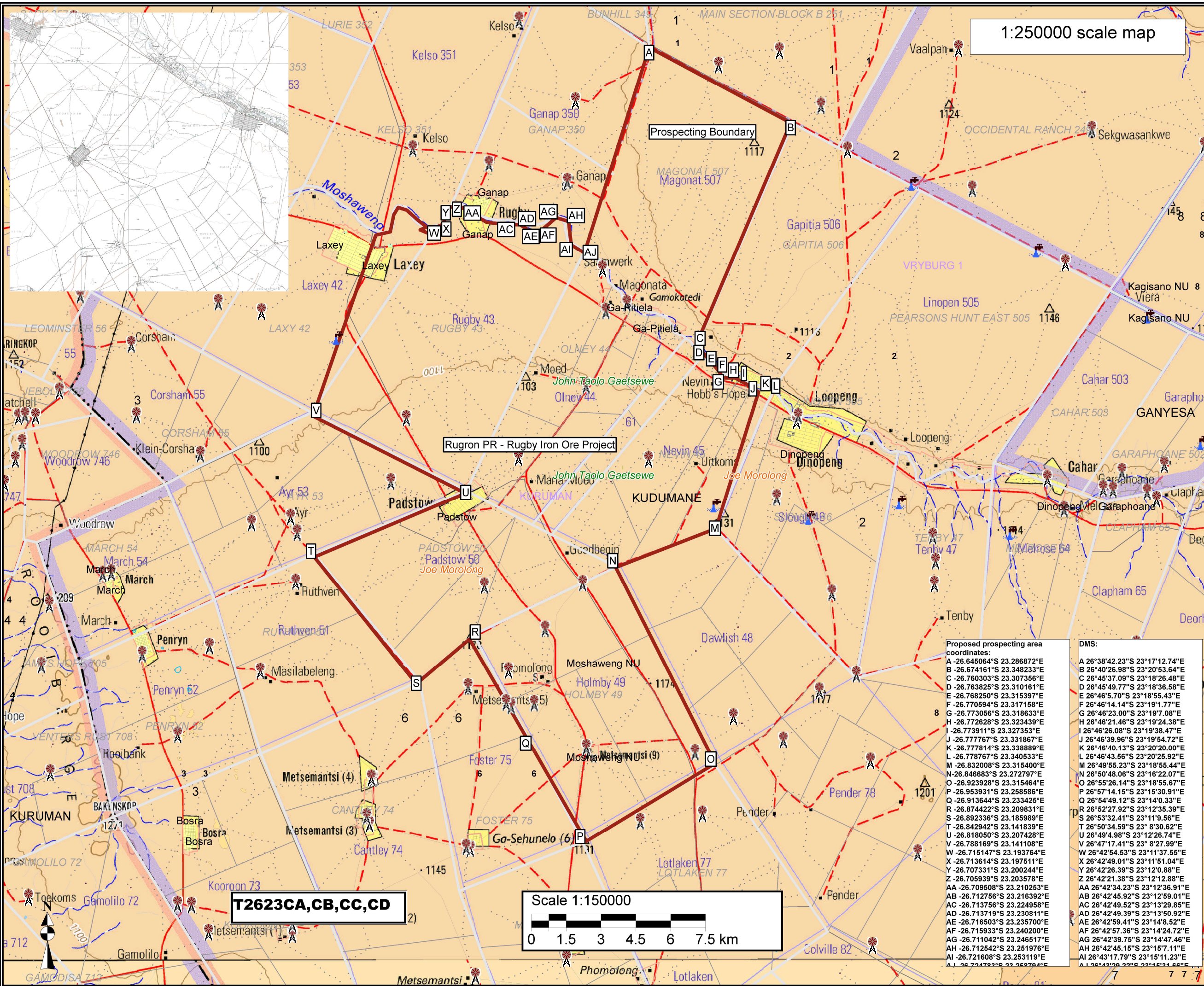


1:250000 scale map



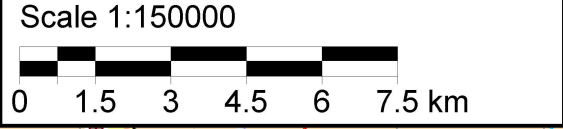
- Legend**
- Artificial surfaces
 - DIGGING
 - Buildings
 - HOUSE
 - Land use
 - LOW URBAN DENSITY
 - River
 - NON-PERENNIAL CENTER LINE
 - PERENNIAL CENTER LINE
 - FLOOD BANK
 - SAND BANK
 - Roads
 - OTHER ACCESS
 - TRACK FOOTPATH
 - Vegetation
 - CULTIVATED LAND
 - WOODLAND
 - Water source
 - FOUNTAIN
 - RESERVOIR
 - WINDPUMP
 - Other
 - Northern Cape
 - John Taolo Gaetsewe District Municipality
 - Joe Morolong Local Municipality
 - Ward no 2,3,6,8
 - Prieska - Administrative region
 - Farm portions
 - Kuruman - Magisterial district
 - Parent farms
 - Property boundary
 - Prospecting Right Application area
 - Rugron Application Area



Rugron PR - Rugby Iron Ore Project

KUDUMANE

T2623CA, CB, CC, CD



Proposed prospecting area coordinates:

A -26.645064°S 23.286872°E
 B -26.674161°S 23.348233°E
 C -26.760303°S 23.307356°E
 D -26.763825°S 23.310161°E
 E -26.768250°S 23.315397°E
 F -26.770594°S 23.317158°E
 G -26.773056°S 23.318633°E
 H -26.772628°S 23.323439°E
 I -26.773911°S 23.327353°E
 J -26.77767°S 23.331867°E
 K -26.777814°S 23.338889°E
 L -26.778767°S 23.340533°E
 M -26.832008°S 23.315400°E
 N -26.846683°S 23.272797°E
 O -26.923928°S 23.315464°E
 P -26.953931°S 23.258586°E
 Q -26.913644°S 23.233425°E
 R -26.874422°S 23.209831°E
 S -26.892336°S 23.185989°E
 T -26.842942°S 23.141839°E
 U -26.818050°S 23.207428°E
 V -26.788169°S 23.141108°E
 W -26.715147°S 23.193764°E
 X -26.713614°S 23.197511°E
 Y -26.707331°S 23.200244°E
 Z -26.705939°S 23.203578°E
 AA -26.709508°S 23.210253°E
 AB -26.712756°S 23.216392°E
 AC -26.713756°S 23.224958°E
 AD -26.713719°S 23.230811°E
 AE -26.716503°S 23.235700°E
 AF -26.715933°S 23.240200°E
 AG -26.711042°S 23.246517°E
 AH -26.712542°S 23.251976°E
 AI -26.721608°S 23.253119°E
 AJ -26.724782°S 23.258704°E

DMS:

A 26°38'42.23"S 23°17'12.74"E
 B 26°40'26.98"S 23°20'53.64"E
 C 26°45'37.09"S 23°18'26.48"E
 D 26°45'49.77"S 23°18'36.58"E
 E 26°46'5.70"S 23°18'55.43"E
 F 26°46'14.14"S 23°19'1.77"E
 G 26°46'23.00"S 23°19'7.08"E
 H 26°46'21.46"S 23°19'24.38"E
 I 26°46'26.08"S 23°19'38.47"E
 J 26°46'39.96"S 23°19'54.72"E
 K 26°46'40.13"S 23°20'0.00"E
 L 26°46'43.56"S 23°20'25.92"E
 M 26°49'55.23"S 23°18'55.44"E
 N 26°50'48.06"S 23°16'22.07"E
 O 26°55'26.14"S 23°18'55.67"E
 P 26°57'14.15"S 23°15'30.91"E
 Q 26°54'49.12"S 23°14'0.33"E
 R 26°52'27.92"S 23°12'35.39"E
 S 26°53'32.41"S 23°11'9.56"E
 T 26°50'34.59"S 23° 8'30.62"E
 U 26°49'4.98"S 23°12'26.74"E
 V 26°47'17.41"S 23° 8'27.99"E
 W 26°42'54.53"S 23°11'37.55"E
 X 26°42'49.01"S 23°11'51.04"E
 Y 26°42'26.39"S 23°12'0.88"E
 Z 26°42'21.38"S 23°12'12.88"E
 AA 26°42'34.23"S 23°12'36.91"E
 AB 26°42'45.92"S 23°12'59.01"E
 AC 26°42'49.52"S 23°13'29.85"E
 AD 26°42'49.39"S 23°13'50.92"E
 AE 26°42'59.41"S 23°14'8.52"E
 AF 26°42'57.36"S 23°14'24.72"E
 AG 26°42'39.75"S 23°14'47.46"E
 AH 26°42'45.15"S 23°15'7.11"E
 AI 26°43'17.79"S 23°15'11.23"E
 AJ 26°43'29.22"S 23°15'24.66"E

Client:
Rugron Exploration Co (Pty) Ltd
 Consultant:

